

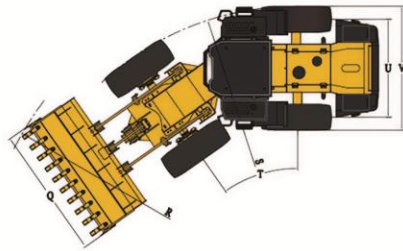
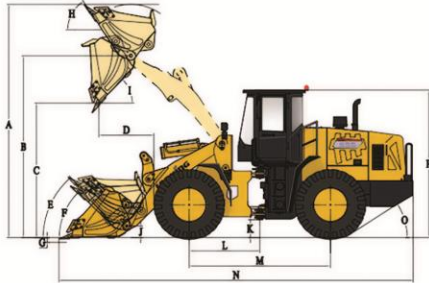
TML 30

تیراژه ماشین
TIRAGE MACHINE



Work Weight	10300 ± 300 kg
Payload Capacity	3000 Kg
Bucket Capacity	1.7m ³
Bucket Type	STANDARD
Engine	WEICHAI-WP6G125E22
Power	125hp (92Kw)/2200 rpm
Engine Torque	500 N.m/1400-1600 rpm
Gearbox	Lonking Transmission
Maximum Forward Speed	7/12/24/36 km/h
Minimum Backward Speed	8.5/28 km/h
Fuel Tank Capacity	200L
Hydraulic Tank Capacity	170L
Tire	17.5-25 L -3
Traction Force	97 ± 3KN
Breakout Force	95 ± 3KN

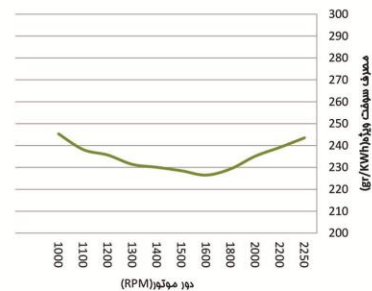
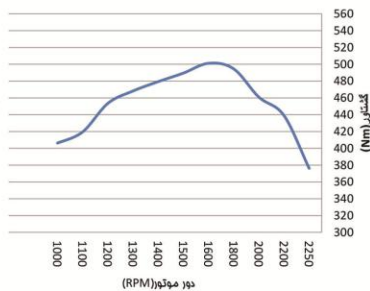
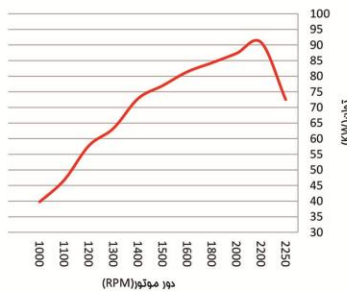
Dimensional Specifications



Symbol	Description	Unit	Size
A	Maximum Dumping Height	mm	4735
B	Maximum Bucket Pin Height	mm	3725
C	Dumping Height At Full Lift(£° Dump Angle)	mm	2930
D	Maximum Reach At Full Lift(£° Dump Angle)	mm	1070
E	Bucket Carry Angle	°	46.2
F	Bucket Rollback Angle On Ground	°	40.7
G	Digging Depth	mm	30-40
H	Maximum Dump Angle At Full Lift	°	54.2
I	Dump Angle At Full Lift	°	46.6
J	Bucket Height In Carry Position	mm	400
K	Minimum Ground Clearance (Below Articulation Point)	mm	355
L	Axle To Pivot Distance	mm	1425
M	Wheelbase	mm	2850
N	Maximum Overall Length	mm	7200
O	Departure Angle	°	26
P	Cab Height	mm	3180
Q	Bucket Width	mm	2500
R	Minimum Turning Radius	mm	6250
S	Minimum Turning Radius (Tire Centerline)	mm	5695
T	Articulation Angle	°	35
U	Axle Track Width	mm	1850
V	Maximum Overall Width	mm	2320

Engine Specifications

The Machine Is Equipped With A Powerful And Enviromentally Friendly 6-Cylinder Engine Featuring 6.75.Liter Displacement And Delivering Up To 92 Kw At 2200 Rpm,Ensuring Both Performance And Sustainability



Model	WEICHAI-WP6G125E22
Power	125hp (92Kw)/2200 rpm
Engine Torque	500 N.m/1400-1600 rpm
Engine Displace Ment	6.75 L
Injection Sistem	Linear Needle Pump

Hydraulic system

Boom raise Time (s)	≤5
Boom Lowering Time (s)	≤4
Total Hydraulic Cycle (s)	9

Hydraulic System Specifications

- Efficient Hydraulic Equipment Contributes To Smoother Operation and Increased Operator Comfort Load-Sensing Technology Ensures
- Optimal Hydraulic Flow, Distribution Between Work Attachments And Steering For Maximum Performance



Pilot Control Valve



Accumulator Assembly



Hydraulic Reservoir



Hydraulic Implement
Control valve



Priority Valve



Hydraulic Pump

Hydraulic System

Lonking

Number of lift arm cylinders –cylinder bore * stroke	125 x 784 mm
Number of bucket cylinders –cylinder bore * stroke	140 x 553 mm
Model of working pump	GEAR PUMP
Flow rate/rotation speed	246 L/min.2200rpm
steering system pressure	14 Mpa
System working pressure	16 Mpa

Gearbox

- Gearbox Manufactured By Lonking
- Single Stage,Single-Turbine,Three Element Torque Converter
- Mechanical Power Shift Transmission For Relible And Efficient Gear Changes

Axles

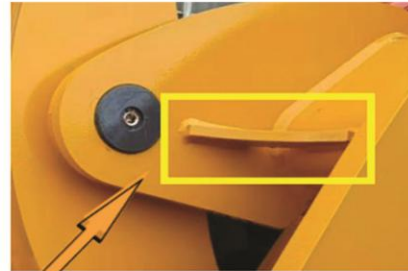
Axles manufactured by LONKING (Dry Type)

Equipped with a 3-speed transmission featuring a planetary reduction system and dual-circuit configuration

Front axle is rigid, rear axle features $\pm 10^\circ$ oscillation movement

Design And Manufacture Of Chassis Equipment

- New chassis design aimed at enhancing strength and reinforcement against loads applied from various directions
- Extended Wheel Base for improved maneuverability, reduced resistance, and enhanced flexibility
- Redesigned and optimized sheet metal support and box lug to reinforce the structure for heavy-duty loading



Cabin And Body

Ergonomically redesigned operator cabin with maximum visibility

Compliant with FOPS/ROPS standards

Fully enclosed cabin with mirrors, comfortable seating, and efficient lighting system

Equipped with air conditioning and heating for optimal temperature control

Adjustable suspension seat to improve operator comfort

Smooth joystick control for hydraulic implements

LCD display panel with full operation status and fault indicators

Front and rear LED lights and warning beacons for improved safety during nighttime operations

Newly designed maintenance spaces for easier service access

Includes USB and MP3 ports, high roof, rearview camera, and wide-angle mirrors

TIRAGE MACHINE
MANUFACTURER OF EARTH MOVING MACHINERY