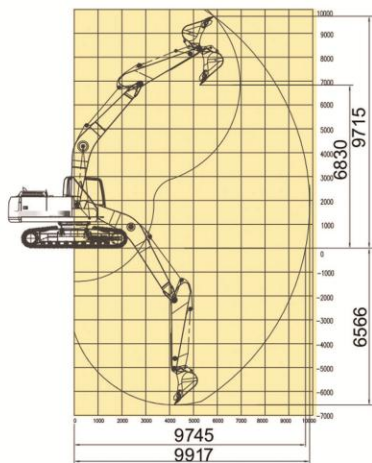


TME225

تیرازه ماشین TIRAGE MACHINE



Max Digging Reach (mm)	9917
Max Digging Depth (mm)	6566
Max Digging Height (mm)	9715
Maximum Dumping Height (mm)	6830
Max Digging Reach (on Ground) (mm)	9745

Work Weight	22600 kg
Bucket Capacity	1.16 m ³
Boom Length	5700mm
Arm / Stick Length	2900mm
Maximum Travel Speed	3/5.1 km/h
Swing Speed (Max Rotation Speed)	12.1 rpm
Gradeability (Max Climb Gradient)	35° (70%)
Maximum Operating Pressure	34.3 MPA
Engine Model	Cummins- 6BTAA5.9-C178-II
Engine Power	180hp(133kW)/2000rpm
Maximum Torque Output	708N.m/ 1500rpm
Fuel Tank Capacity	350L
Main Hydraulic Pump	Lonking
Main Control Valve	Kawasaki
Slewing Mechanism	Lonking
Propulsion Hydraulic Motor	Lonking
Maximum Flow Rate of Main Pump	2*217 L/min
(Battery) System voltage	2*12V,120Ah(24V)

Cabin Specifications



Hydraulic suspension seat with multi-directional adjustment for enhanced comfort and optimal accessibility



High-performance automatic air conditioning with multi-directional vents



Ergonomic joysticks designed for efficient control and reduced operator fatigue

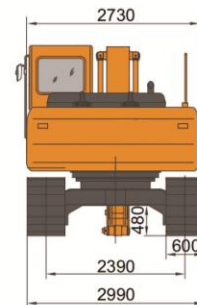
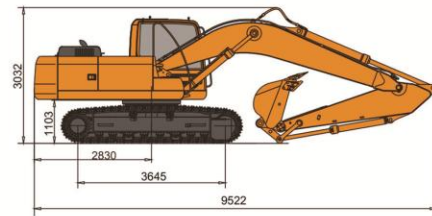


Operator cabin designed to ROPS standard with 360° safety reinforced pillars and 2.7m³ of functional workspace

Dimensional Specifications

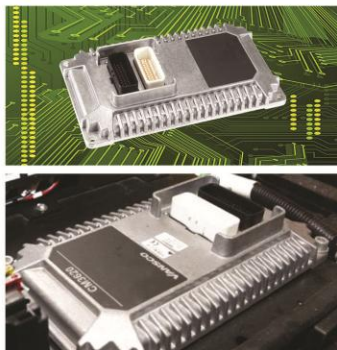
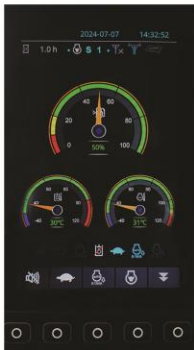
Overall Transport Length	9522
Overall Transport Height	3032
Axle-to-Axle Distance (Wheelbase)	3645
Ground Clearance Beneath Counterweight	1103
Track Gauge (Centerline Distance of Tracks)	2390
Maximum Overall Machine Width	2990
Upper Structure Total Width	2730
Track Shoe Effective Length	600
Maximum Undercarriage Ground Height	480

Tail Swing Radius (Swing Center to Counterweight Rear Edge) 2830



Electronic Control System

The R&D division of LONKING has enhanced the advanced electronic monitoring system MCSS, to incorporate the following technical features into the machine :



Automated maintenance reminder

Low oil pressure protection

Real-time system monitoring

Auto shutdown of engine on overload

Automatic fault detection and warning

Three-stage power control system

Engine Specifications

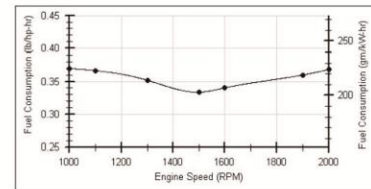
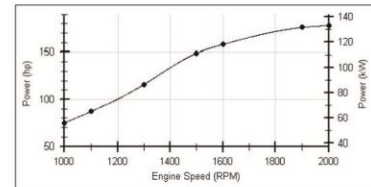
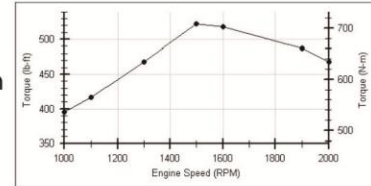
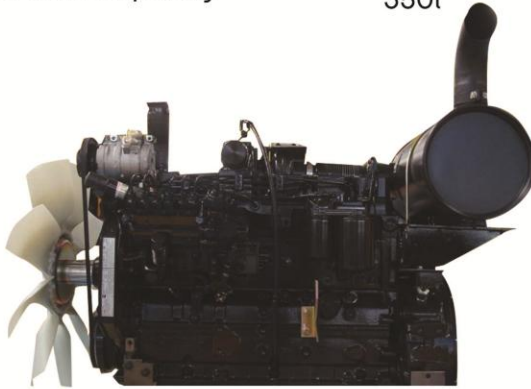
- A high-performance 6-cylinder Cummins engine, model 6BTAA5.9C
Equipped with a 5.9L turbocharger, environmentally compliant

- Certified fuel efficiency label – Grade (E)

Maximum Horse Power 180hp(133kW)/2000rpm

Maximum Engine Torque 708N.m/1500rpm

Fuel Tank Capacity 350l



Hydraulic System Specifications

Key Features Of The Hydraulic System

Positive Displacement System

High Responsiveness and Excellent Controllability

Enhanced excavation force efficiency combined with optimized energy utilization

Two-stage Main Relief Pressure Control via Electrical Circuit

MAXIMUM WORKING PRESSURE 34.3 MPa

Peak Flow Rate of Main Hydraulic Pump 2*217 L/min

Peak Operating Pressure of Pilot Hydraulic Pump 3.9 Mpa

Hydraulic tank capacity 220 L



Rotary Hydraulic Motor (Swing Motor)



Primary Hydraulic Pump Unit



Machine Propulsion Control Pedal



Control Joystick



Main Control Valve



Hydrostatic Travel Motor

Structural Design & Manufacturing

Comprehensive finite element analysis (FEA) of all primary structural components using advanced engineering software, focusing on identifying and reinforcing high-stress concentration zones. Implementation of high-precision, fully automated robotic welding systems to minimize operational errors and eliminate potential weld defects

Chassis And Undercarriage.

Structural enhancement of the revolving frame for improved torsional rigidity and operational durability

Reinforced undercarriage frame designed for superior load-bearing capacity and enhanced wear resistance

Triple-grouser track shoes engineered for optimal traction and heavy-duty mining applications

Track shoe length	600mm
-------------------	-------

Number of track shoes per side	49
--------------------------------	----

Number of carrier rollers (top) per side	2
--	---

Number of track rollers (bottom) per side	9
---	---



📍 No 1 Pishro Corner Abbasi St South Kamranieh Tehran

🌐 WWW.TIRAGE-MACHINE.IR

☎ +9821 222 15 144 📞 +9821 22 21 51 33